



Blue Forest

BESPOKE LUXURY TREE HOUSES



Blue Forest™

www.blueforest.com

Explorers of the imagination

Blue Forest

BESPOKE LUXURY TREE HOUSES



Welcome to our unique world of imagination and creativity. I grew up in Africa where I spent my childhood enjoying the beauty of the great outdoors, and Blue Forest was born from these experiences and from a desire to make the world more adventurous. We are an award-winning company renowned for pushing the boundaries of design, and bringing a touch of magic to our creations.

Our skilled team of architectural designers, interior designers and project managers will work with you to create a tree house that is completely personal to you.

We provide you with a coherent and complete design, construction and management service that allows us to mastermind your project from conception to completion. Whatever your dreams, we can turn them into a reality.

Andy Payne.

“No matter what your interest – sit back, relax and let your imaginations run wild!”

ANDY PAYNE, MD, BLUE FOREST



Blue Forest
 BESPOKE LUXURY TREE HOUSES

Welcome	5	Tarifa Eco-Lodges	32 - 33
Introduction	9	Tree House Gallery	34 - 35
The Nook	10 - 11	Fairytale Castle	36 - 37
Faun's Realm	12 - 13	Pool View Tree House	38 - 39
Timbertop Hangout	14 - 17	Living The Highlife	40 - 41
Rustic Cabin	18 - 19	At The Water's Edge	42 - 45
Little Acorn	20 - 21	The Magic Home	46 - 49
Tree House Gallery	22 - 23	Tree House Gallery	50 - 51
The Enchanted Hideouts	24 - 25	Inspired By Nature	52 - 53
Tree House Kitchen	26 - 29	The Design Process	54 - 55
Fibonacci Tree House	30 - 31	FAQ's - What Happens Next	56 - 57

“The attention to detail is extraordinary and the craftsmanship really immaculate. We cannot praise the whole process and the finished product highly enough. Thank you.”

NATASHA KAPLINSKY, SUSSEX



Tree houses evoke childhood memories, imagination and creativity. Despite the traditional stereotype however, tree houses are not just for children!

Our designs come in every shape, form and style. Each project is finished to the highest standard by our team of experienced craftsmen – there are no limits to how you could use your tree house, if you can imagine it, the chances are we have built it in the treetops!

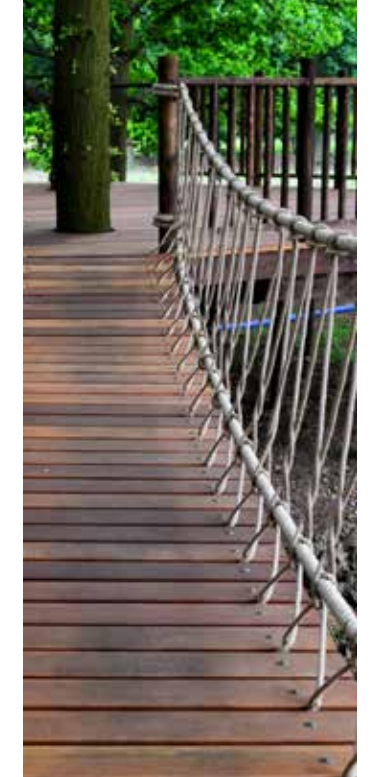
- Treetop Hideaways
- Blissful Family Retreats
- Fairy-tale Playhouses
- Romantic Getaways
- Fully Equipped Home Offices
- Children's Dens and Play Structures
- Teenage Hangouts
- Party Venues and Entertaining Spaces
- Yoga Studios, Meditation Platforms and Art Studios

“People tell me they are extending their house and I say build a tree house instead. It's the price of a large conservatory but much more fun.”

SHARON SMITH, WEEKEND FINANCIAL TIMES

The Nook

FAMILY TREE HOUSE



The Nook promises an unforgettable experience. This stylish tree house has been crafted to the highest of standards with classic Oak floors and arch windows. Set up a BBQ on the outdoor deck and dine al-fresco as you look over the views of the surrounding woodland with a glass of wine.

Using your treetop getaway as a calming and sophisticated space should not stop you from embracing your sense of adventure – there are plenty of fun features! Traverse the rope bridge to the play deck, or climb the crow's nest for

a view of the garden. Take a leap of faith and whizz down the exhilarating zip-wire, then test your skills on the ground-level adventure trail. Children will adore clambering up the net and climbing wall.

As the evening draws in, tempt the children from their play with the promise of toasted marshmallows – gather your friends and family around the sensational fire pit, wrap up and spend the night sharing stories and gazing at the stars.

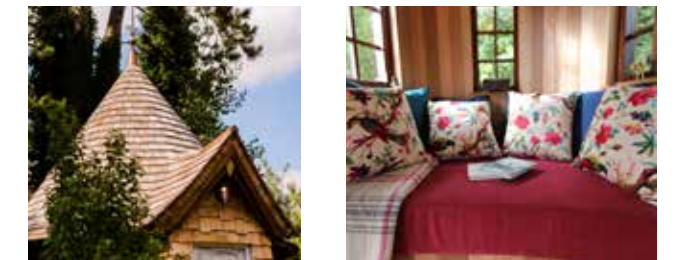
“It’s far too nice for the kids, I’m thinking of moving in myself.”

MR. A STALEY, STAFFORDSHIRE



Faun's Realm

CHILDREN'S TREE HOUSE



Stepping into the Faun's Realm Tree House will transport you into the magical land of Narnia. The children of the family were the key influencers for this scheme with the design developed from their own ideas, making the tree house a personal space for building memories and experiencing adventures.

From the copper dragon scales on the turret roof to the hand-carved toadstool table and chairs, this tree house's design lends itself to the incredible fantasy world created in the classic books by C.S. Lewis. Running over the

rope bridge, it is impossible not to imagine yourself crossing the Eastern Ocean to the world's end.

Inside you are transported to a pixie grotto where glowing moon orbs hang from the ceiling and pink blossoms grow from the beams. Beautifully finished to the highest standards, the spacious interior includes storage space for toys built underneath a cosy bay window seat and a great hand-crafted Oak wardrobe with a secret hobbit door that opens up to reveal a mighty stainless-steel slide curving out to the garden below.



Timbertop Hangout

FAMILY TREE HOUSE

A shady woodland path brings you to a hideaway that offers a magical treetop experience. Nestled within the branches of a mature Oak tree, Timbertop Hangout allows you to disappear from a busy life, get close to nature and relax with your family.

The curved tree house offers a multi-purpose kids hideout, with its large bay window making it ideal for sleepovers. Amidst the leaves and branches sits an additional crow's nest lookout raised high above, accessed by a ladder leaning against the trunk of the tree.

Here you can unwind to the sound of the breeze rustling through the leaves as you sit with a book or look out over the spectacular panoramic views.

Although perfect as an idyllic garden retreat, this tree house was primarily designed for keeping energetic kids playing outside for hours. If it's adventure that you're looking for, a 60m zip-wire offers an exhilarating ride like no other through the trees.

*“Why should children have all the fun?
There's room in the branches for grown-ups...”*

SONIA PURNELL, THE SUNDAY TELEGRAPH





Rustic Cabin

FAMILY TREE HOUSE



Set within the mature trees of a farmhouse garden sits a quirky, rustic cabin tree house, designed as a cosy, yet adventurous escape for the grandchildren to enjoy.

The tree house consists of two levels, with a small ladder to clamber up and down, as well as a basket and pulley for the children to transport toys between the levels.

Rustic Cedar shakes, charred timber cladding and reclaimed timber have been used to give the tree house a delightfully natural and weathered look. The unique design features

within this tree house are endless! The lower level has been decorated beautifully, with reclaimed boat shelving above a gorgeous, yet rustic desk.

The upper level is perfect for sleepovers, lazing about on giant floor cushions or curling up on the bay window seating area with a good book. But the tree house is not only about relaxing days spent enjoying the warmth and inviting atmosphere inside, it also offers fun and excitement with a zip-wire and adventure play deck.



Little Acorn

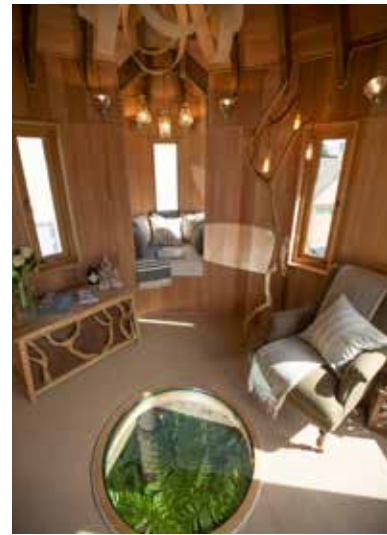
FAMILY TREE HOUSE

The Little Acorn Tree House is a natural woodland hideaway set amongst the leafy branches of a magnificent Oak tree. Designed to blend in with its surroundings, this captivating retreat allows you to get close and personal with the great outdoors.

Features such as the charming Cedar shingles, curved roof and copper guttering give the tree house a truly charismatic appearance. Climbing up the wooden spiral staircase is like entering your own sanctuary amongst the

trees. The decked terrace positioned under the ancient green canopy is the perfect space for the family to enjoy alfresco dining whilst overlooking the views.

Inside, the tree house has a stylish kitchenette, living space and separate bathroom. Offering extra space away from the main family home, the teenagers in the family use the tree house as their own den for quiet study or film nights with friends.





The Enchanted Hideouts

CHILDREN'S TREE HOUSE



Every child dreams of something special like **The Enchanted Hideouts**. Two charming fairytale tree houses sit in a secluded area of the garden surrounded by a network of adventurous rope bridges and ground level play features.

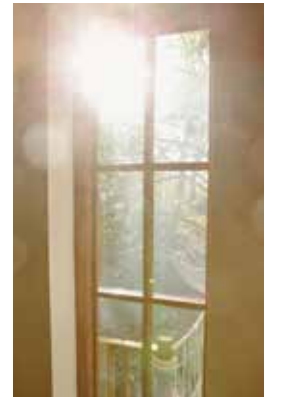
An inviting space amongst the trees, the hideouts allow the children to let their imaginations run free. The decks include everything from fireman's poles to jungle bridges, slides and climbing nets. Little adventure-seekers will love clambering up the

towering crow's nest platform, or using the secret escape pod if they need a speedy exit. Both of the tree houses have a magical style with turreted roofs capped with decorative copper finials.

The two children have a tree house each with a colourful playroom to keep their own toys in. On rainy days, the children can relax on their cosy bespoke sofas and watch a film on the home cinema system.

"Tree houses have moved on since Enid Blyton's Secret Seven built their den in Windy Woods...(Blue Forest) will fulfil your every tree house fantasy..."

JENNY COAD - THE DAILY MAIL



Tree House Kitchen

FAMILY TREE HOUSE

This tree house is where the founder of a gourmet food company dreams up new recipes for her exclusive clients. A rope bridge trail leads you from one tree platform to another and by the time you reach the tree house and step into the bright, comfy calm of the kitchen, you're in your own private world.

The spacious kitchen takes centre stage – seated at the large table, you can imagine how it caters for the group cooking lessons that are

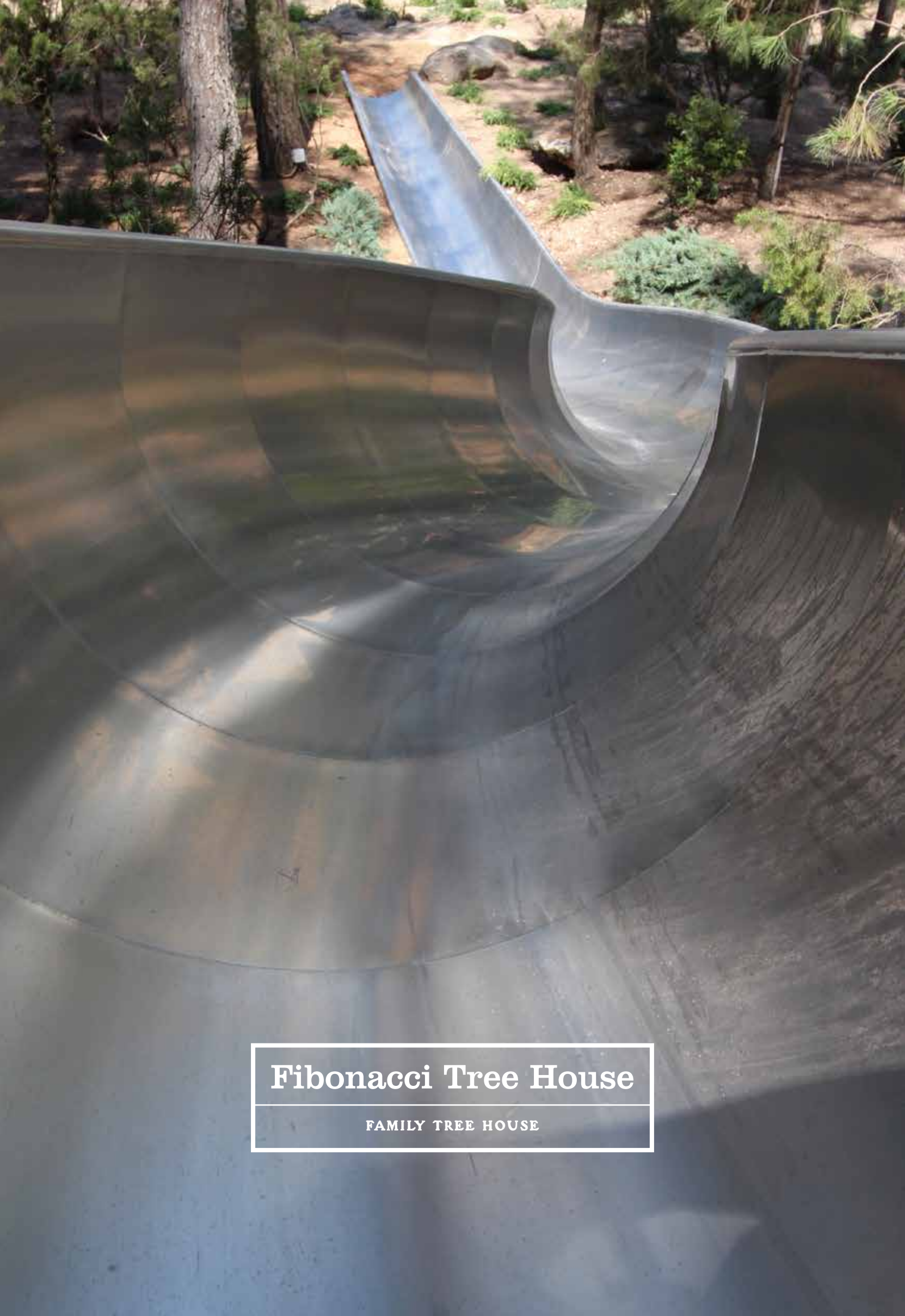
regularly hosted to raise funds for the Prince's Trust; with the clanging of pots and pans in the background and the rich smells of home-made soups and sauces in the air.

Children can spend hours together on the play deck, racing down the slide and taking turns on the zip-wire. There's an outdoor seating deck that looks out across the gardens where you can sit around the fire pit and eat with friends as the evening draws in.

"We simply cannot praise the Blue Forest team enough, they were always working hard with an obvious attention to detail and passion for what they do. I could not recommend them highly enough."

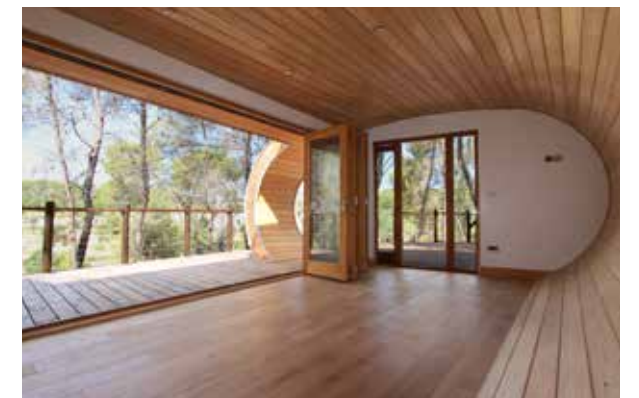
JENNIFER IRVINE, SURREY





Fibonacci Tree House

FAMILY TREE HOUSE



Inspired by the Fibonacci spiral, a logarithmic spiral found in nature (for example a snail's shell), this tree house sits in harmony with its forest surroundings.

Starting from the bottom of the garden, rope bridges connect three decked platforms together creating a walkway which leads visitors through the shady pine forests to the tree house.

The tree house is finished with Larch boards and features a handcrafted copper fascia with rustic rope detail. With its sprawling main terrace

set 3.5m above the forest floor, this is the perfect place to retreat from the Spanish heat. With a drinks fridge and kitchenette inside, refreshments are always on hand. The 4m glass door folds back to create one large outdoor space perfect for larger parties and cocktails.

A show-stopping 23m slide takes the sense of adventure up a notch, offering an exhilarating ride through the woods back to the garden and outside pool, making this tree house an excellent space for both thrill-seeking teenagers and family parties.

“With views over my pool and garden, it's the perfect place for pre-dinner drinks.”

MR DAVID LLOYD, SURREY

Tarifa

ECO-LODGES



These private luxury eco-lodges are set within the foothills surrounding Tarifa, on the Costa de la Luz. Unwind as you sit on a comfortable wicker seat on the deck with an icy drink, with incredible views of the sun-baked countryside across the Straits of Gibraltar stretching out ahead of you.

From the moment you step out of the sun into one of the eco-lodges, you are greeted by the fresh scent of timber and it's easy to appreciate

the expert detailing of the interior. The lodges are highly insulated to withstand the harsh environment, and the buildings are equipped with the latest state-of-the-art solar energy and water heating solutions, including composting toilets and a water catchment and purification system.

Blending seamlessly into the surrounding foliage, the secluded lodges reflect a traditional, rustic cabin style with their naturally-shaped exterior cladding and curved roofs.

“The tree house has a great calming, positive effect and is a very inspirational place for me to escape to.”

MS BAGEDO, THE OBSERVER



Fairytale Castle

FAMILY TREE HOUSE



Nestled within a secret garden full of colourful undergrowth and tall ferns, this hidden tree house showcases beautiful gothic features, including a grand 6m tower and a solid Oak arched window. The structure is built around a copper Beech tree, which grows through the main living room.

Exterior decking has been built around surrounding trees, making it look like the branches have wound their way in between the nooks and crannies of the fairy-tale house.

As the evening draws in and the sun sets over the treetops, you can retreat inside to the bay window and watch out for woodland animals as they scurry about below you.

For a more spectacular view, a spiral staircase winds upwards to a look-out platform at the top of the high tower. For a bit of speed and adrenaline, a 45m zip-wire lets you launch yourself from the deck and accelerate through the trees.



Pool View Tree House

FAMILY TREE HOUSE



Overlooking the splendid private swimming pool, this tree house has a sprawling deck split over several levels with a long rope bridge between trees. Laze in the sunshine with a light lunch prepared in the tree house's kitchenette.

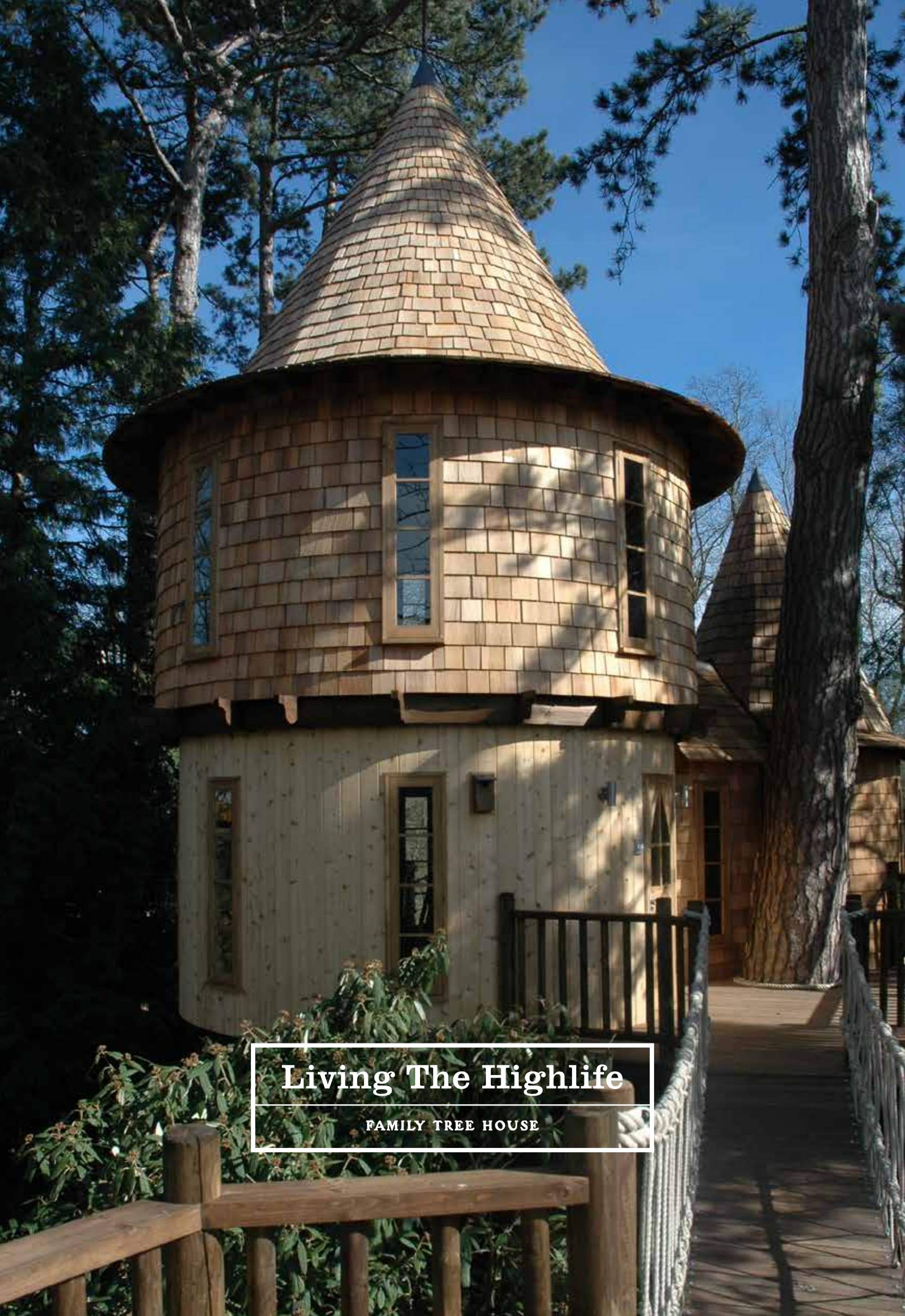
Cool down by leaping off the diving platform into the pool. Bespoke double doors allow plenty of light into the tree house, and can be opened up for parties. Wine coolers and a drinks fridge mean that you can keep large numbers of guests topped up with cocktails.

Luxurious and elegant, the interior provides fabulous comfort. A bespoke home cinema,

hand-built TV cabinet and a semi-circular sofa make the tree house a great venue for family film nights and Xbox gaming.

For sleepovers, there is a mezzanine loft accessed by a ladder and trapdoor. A glass balustrade gives a great view down into the living space below, generating a sense of height and adventure.

This Pool View tree house blends in perfectly with the rest of the garden design and creates a one-of-a-kind feature for the client's property.



Living The Highlife

FAMILY TREE HOUSE



No matter how old you are, you can still dream of a tree house hideaway. Living The Highlife consists of two structures, one for children to lose themselves in their imaginations and the other for grown up relaxation, connected by a dramatic network of treetop walkways.

With its turret towers protruding at different heights, the children's tree house transports you into a fairy-tale world of elves and castles. A secret trapdoor leads to a games room with a flat screen television and games console; it's the hang-out den that dreams are made of and

will continue to cater for the children as they grow into teenagers.

For an exciting flight through the garden, a 60m zip-wire descends from a crow's nest down to the start of an adventure trail.

The adult's tree house has a beautiful thatched roof with walls clad in hand-split Oak shingles and Cedar tongue-and-groove boards, giving the structure a sophisticated safari lodge feel. It's a spectacular venue for treetop drinks parties, with a large living area and bar for entertaining.

"It's fantastic, we're delighted."

THE OWNER



At The Water's Edge

FAMILY TREE HOUSE



With a collection of tree houses for the young ones and a tranquil lake house for the adults, everyone in the family has their own space to enjoy. The first thing that catches your eye is a gleaming copper roof among two Cedar turrets. Each tree house has been designed with different styles to reflect the personalities of each child in the family.

There is plenty of space inside the tree houses for the children to keep their own toys. Cozy bay window seats overlooking the gardens are great for spending rainy afternoons inside with a film. Indiana-Jones style rope bridges connect the decks so the children can run

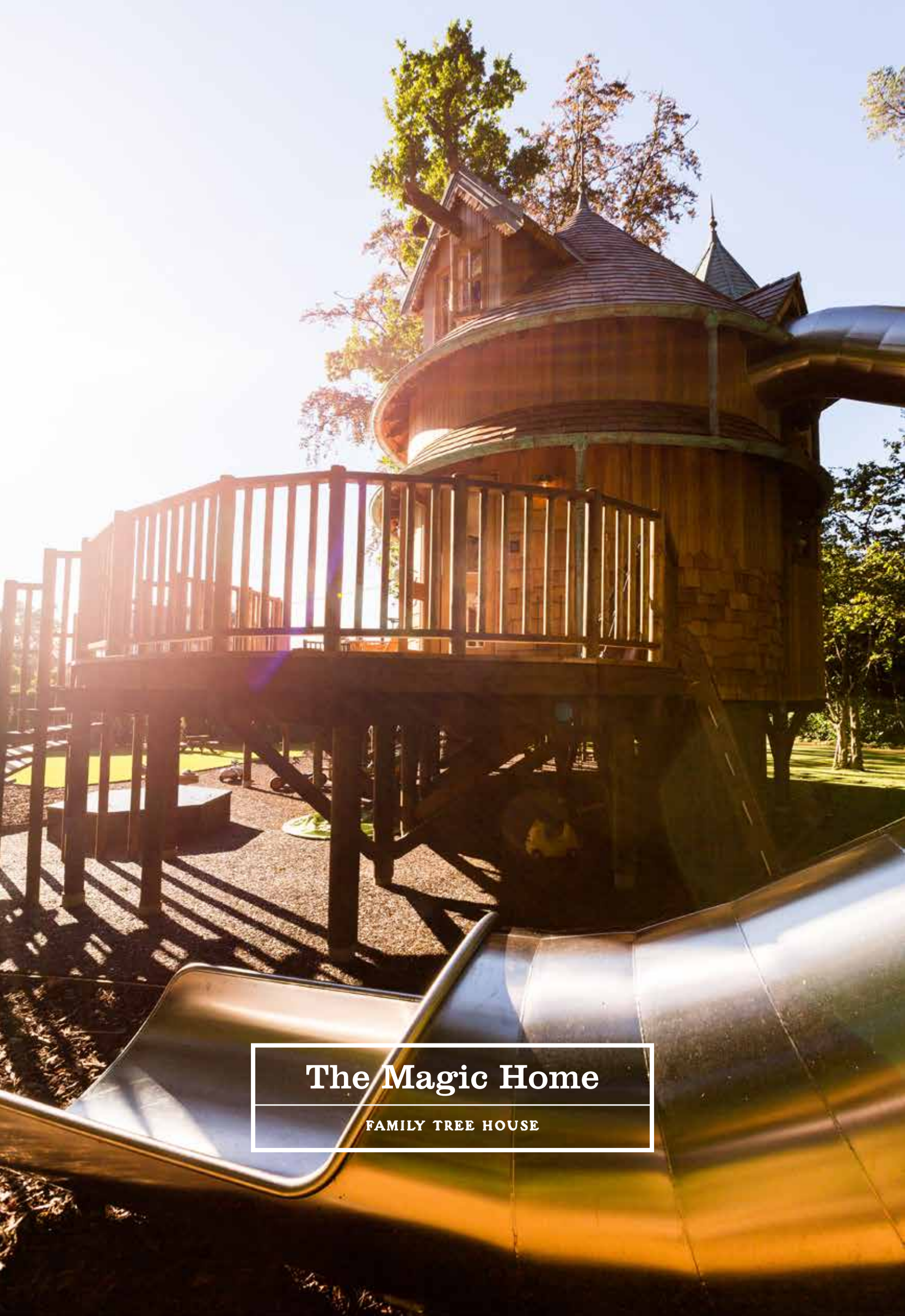
across to each other's tree houses before climbing up the cargo net or sliding down the fireman's pole. The grown-ups can sit back on the deck overlooking the koi carp lake or de-stress in their own personal gym in The Lake House while the kids play nearby.

On summer days, cool off with a swim in the pool featuring a bespoke waterfall. When it's not needed, the pool is cleverly concealed under made-to-measure panels which gives even more space. As night falls, mood lighting across the decking can be altered using a Crestron control system.

"Fitted with all mod cons, tree houses are no longer just for kids."

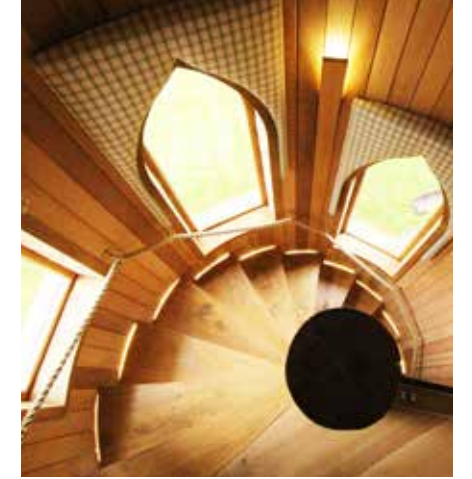
WENDY SLOANE, SUNDAY TIMES





The Magic Home

FAMILY TREE HOUSE



The Magic Home overlooks the beautifully tended gardens and tennis court from its elevated position on the edge of the grounds.

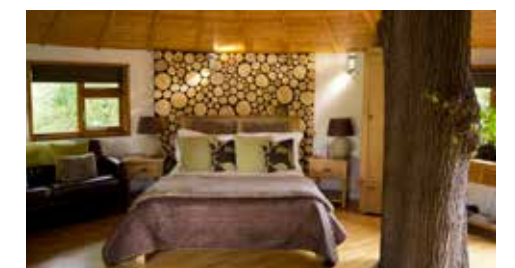
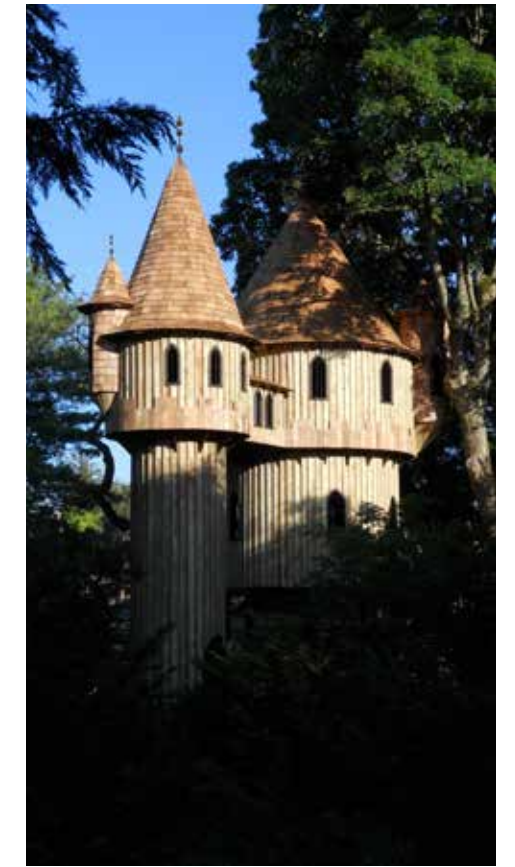
Inside, a spiral staircase can be found hidden behind a revolving bespoke bookcase. The secret staircase twists up to a playroom with beautiful beams, a dormer window and a glazed balustrade that looks down to the main room below. A desk made from giant story books nestles in the corner and a moon light hangs from the ceiling.

If you open the doors to a Narnia-inspired wardrobe, you'll discover the entrance to a

tubular stainless steel slide which curves all the way around the tree house to the sandpit outside. A truly unique space, the tree house is also perfect for entertaining friends and visitors with a bespoke curved day-bed sofa. Standing in the centre of the living space is an eye-catching de-barked tree support column with LED floor lights surrounding the base.

A marble-topped kitchenette allows for afternoon lunches or evening party canapes to be easily prepared from the tree house, which can then be enjoyed on the decks outside.







Inspired By Nature

OUR PHILOSOPHY



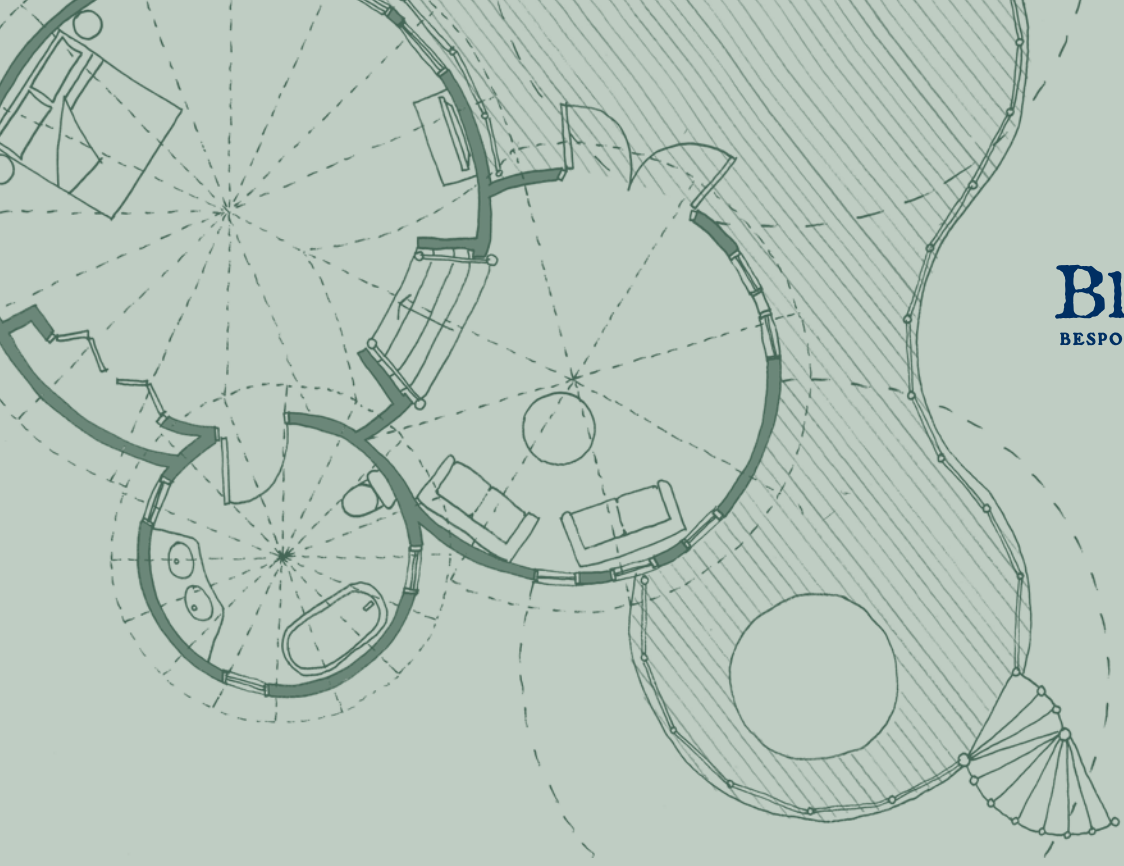
Through the unique and creative nature of our designs, Blue Forest aims to change people's perspectives; unlocking their imaginations and transporting them into a treetop world above the stresses of everyday life.

We seek to combine environmentally sensitive techniques with ethical working practices,

providing all our clients, both private and commercial, with the highest standard of service no matter what their requirements. We pride ourselves on our highly skilled team, including designers, crafts people and project managers, who ensure our tree houses are at the forefront of sustainable luxury design.

“Blue Forest’s bespoke tailored services provide an effortless solution, where the process from design to the finished product is handled, to ensure clients and customers end up with a perfect tree house.”

THE FOXLEY DOCKET

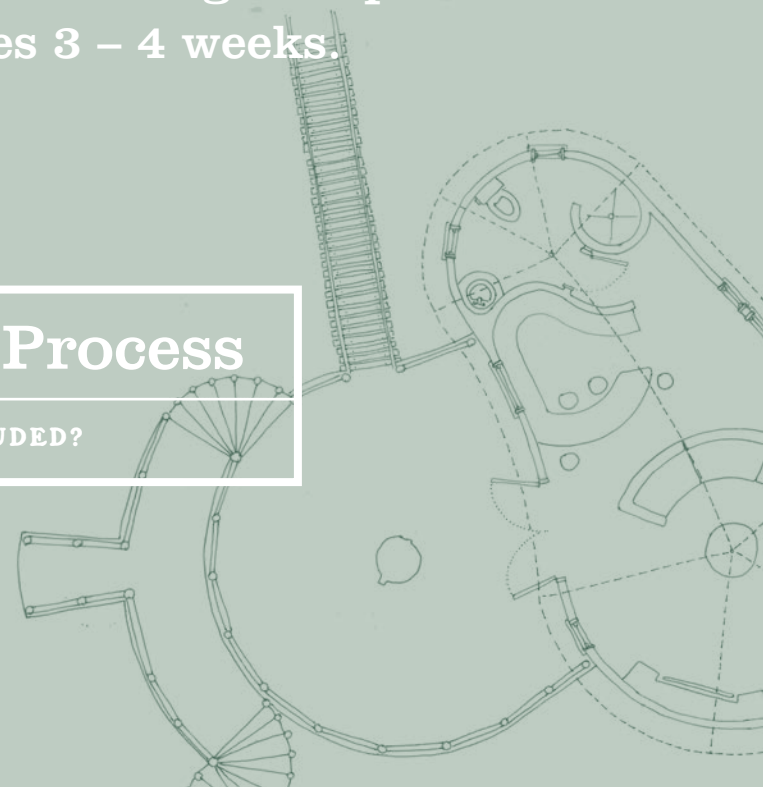


Blue Forest's creative design team specialise in the conception of unique and inspiring structures that reflect the beauty of the natural world.

If you are interested in building a tree house it is wise to think ahead as the design and planning process can take several months.

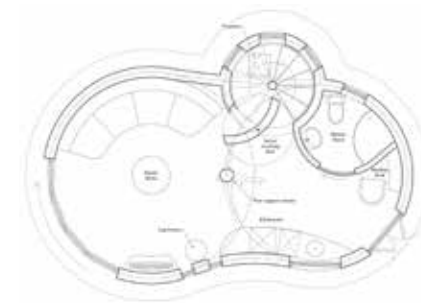
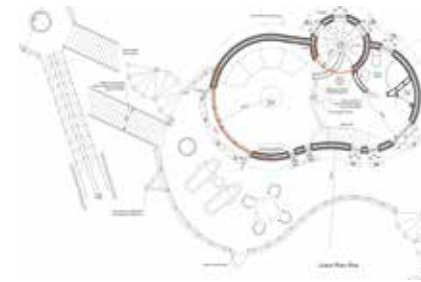
First we conduct an initial survey, and once we have received your confirmation to proceed the team will begin work on your Design Proposal which normally takes 3 – 4 weeks.

The Design Process
WHAT'S INCLUDED?



PLANS

Your Design Proposal will be presented to you in a personalised A3 portfolio. This will include scaled tree house floor and site plans showing the location of all significant trees and environmental features.



ELEVATIONS

Scaled elevations are included, representing a view of the design at eye level. Each elevation shows the location of all the key building elements including rooflines, windows and doors, etc.



PERSPECTIVES

You will also receive various computer rendered perspectives, providing a very clear visual image of what the completed structure will look like once it is built. The perspectives also illustrate the choice of exterior cladding and roof materials etc.



INTERIORS

Our interior designer will work with you to create a scheme for your tree house, including the lighting and fixtures, to reflect your personal taste. Visual mood boards will be included to help illustrate the overall style.



QUOTATION

As part of your proposal we will lay out our cost quotations along with any additional design options you might like to consider.

SCHEDULES

Finally, we will provide you with an estimated time period for the proposed construction works required. This will be subject to any additional design options chosen and is weather dependent.



FAQ's

Questions naturally arise when considering such a unique addition to your home, be it a family retreat, a playhouse or an art studio. Below are some of the more frequently asked questions and their answers, but if you'd like any additional information then of course please contact us using the details opposite.

Does Blue Forest only design tree houses?
Although we are best known for our tree houses, we have developed expertise in other projects including woodland playgrounds, classrooms, lodges and canopy walkways.

What services do you offer?
Our tailored service provides a turnkey solution, where everything from design and planning to construction and commissioning comes in a professional package.

What is the process and how long does it take?
It can take time so it's always worth thinking ahead. A member of the team will visit you to discuss your ideas and undertake a survey of the location.

We aim to provide you with a set of plans and an itemised quotation within 3-4 weeks. If you proceed there can be a wait of up to 3 months (depending on the time of year) until we are able to commence construction. On average, construction takes between 6-8 weeks depending on the size of your project.

Do I need a mature tree to support my tree house?

Not necessarily. The structure can be self-supporting.

Is planning permission required?

An elevated structure in the trees will require planning permission. For a ground based building, planning will depend on its location, its size, the height of the structure and what you intend to use it for. We can offer advice and guidance, and act as agents on your behalf.

How much will it cost?

That's entirely up to you, the sky is the limit! All Blue Forest tree houses are bespoke so we are unable to provide a price until we have completed a full site survey. Projects start from approx. £30,000. We will work with you to ensure we create the perfect tree house for you.

Do you only build in the UK?

We mainly work in the UK and Europe but we have worked on projects across the world, as far as Panama, The Maldives, Borneo and Malawi. We would be happy to talk to you if you are located outside the UK. We also offer a design or architectural consultancy service for customers who are further afield if required.

Once built, do you offer maintenance?

We have a comprehensive annual tree house maintenance service. Maintenance is required every year to ensure that the structure and trees remain secure for years to come, and more importantly that its users are not put at any risk.

The Adventure Starts Here

Creating a Blue Forest tree house is an exciting process. Our experienced and highly skilled team will involve you at every stage to create a personal design that you will love.

Our process is as follows:

An Initial Consultation

We would be delighted to arrange a consultation at a convenient time in order to:

- Listen to your ideas and requirements
- Present a selection of previous projects for your interest
- Review financial budgets
- Consider planning issues
- Discuss time scales and logistics
- Examine the surrounding environment and assess suitable locations

Design Stage:

Should you wish to proceed, we would complete a full set of scaled designs and elevations. You'll also be presented with 3D computer models of the design, providing a photo-realistic image of your tree house before it is built. We charge a set fee for this service, calculated on the size and complexity of your project.

A Comprehensive Quotation

Along with our designs we will submit an itemised quotation for the construction of your tree house. If you wish to proceed, the start date for the building works will be confirmed to you in writing upon receipt of your deposit. Each tree house is unique, and designed to suit each customer's budget.

Contact the team to start your tree house adventure!

Phone: +44 (0) 1892 750090 Email: info@blueforest.com

Blue Forest (UK) Ltd, The Studio, Bensfield Farm,
Beech Hill, Wadhurst, East Sussex, TN5 6JR

www.blueforest.com



